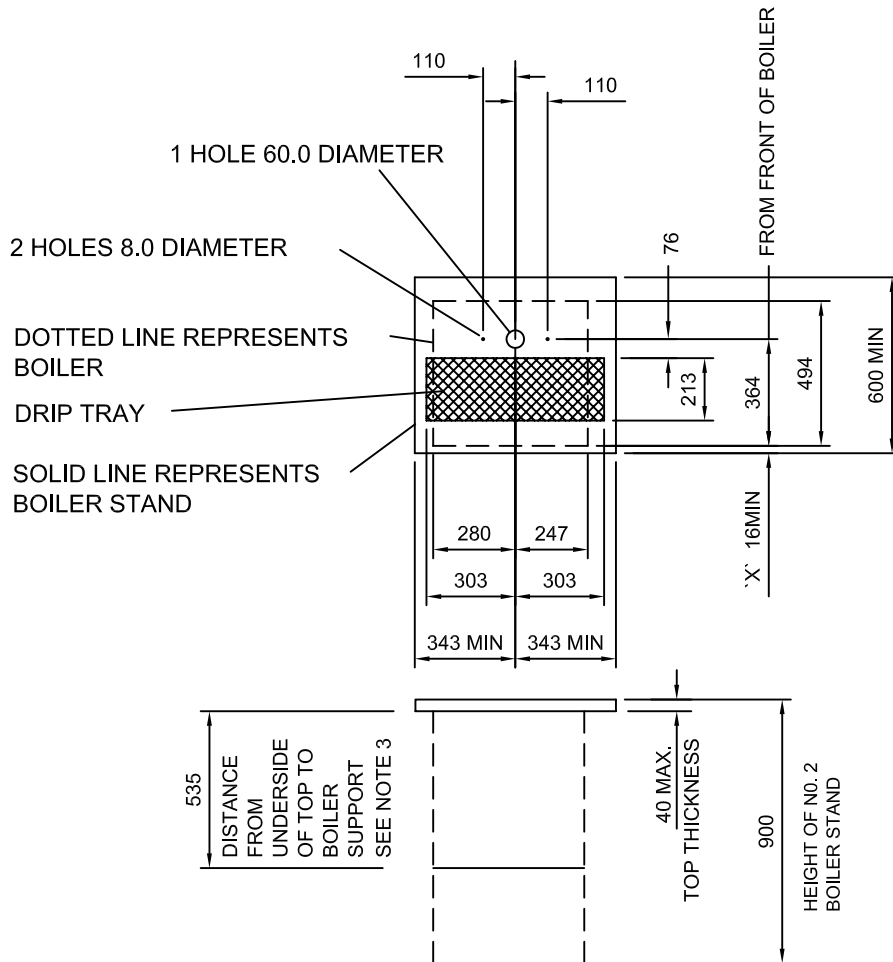


UNDERCOUNTER PRESSURE BOILER BEX9-11 WITH ADF FONT UNIT



REF. DIMENSION 'X'
ALLOWANCE FOR BOILER FRONT PANEL/DOOR
TO BE MADE IN ORDER TO ACHIEVE A DIMENSION FOR 'X'
HEIGHT FROM UNDERSIDE OF TOP TO BOILER SUPPORT
IS 535m.m.

NOTES:

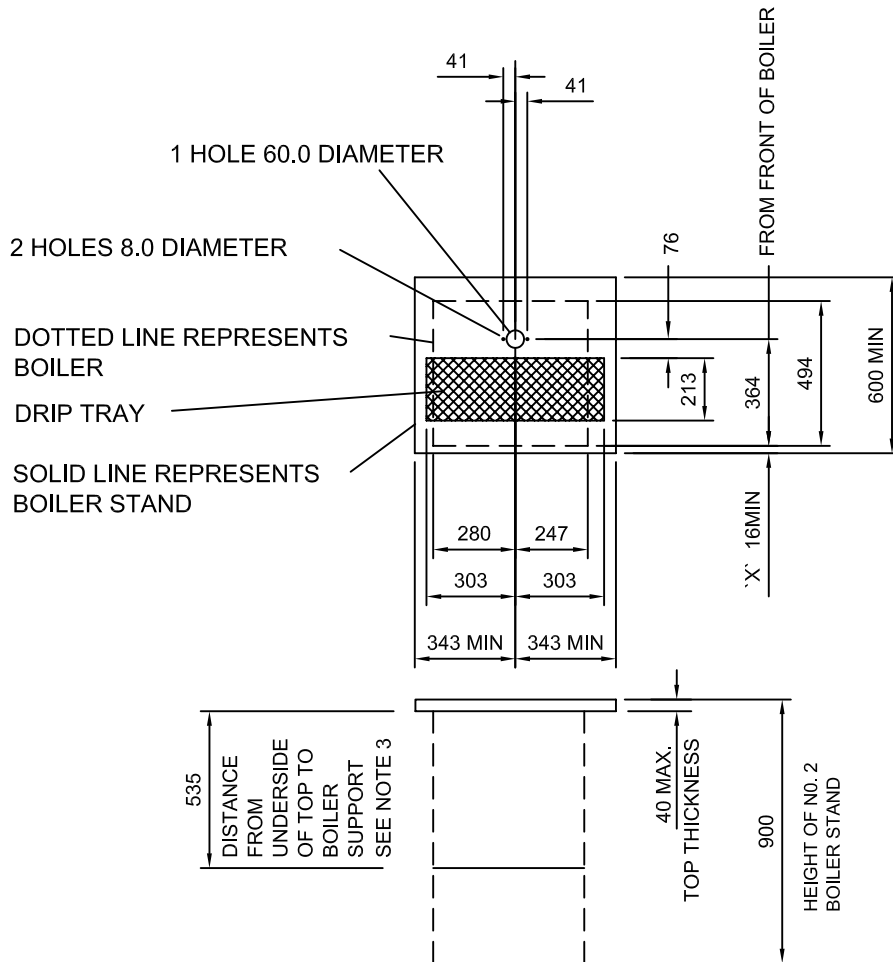
1. WEIGHT OF BEX9 BOILER WITH WATER 43kg
2. IF WATER TREATMENT UNIT IS REQUIRED THEN ADDITIONAL ALLOWANCE TO WIDTH OF CABINET SHOULD BE MADE. WIDTH STATED IS ONLY FOR BOILER REQUIREMENT
3. IF BOILER CABINET IS NOT SUPPLIED BY HOBART THEN CABINET MANUFACTURER MUST MAKE BOILER SUPPORT.

ELECTRICS: 400/50/3 + N + E 9.0kW FUSE AT 20 AMPS/PHASE, ENTERING FROM UNDER BOILER
WATER: 3/4" B.S.P. 5°C TO 60°C 1.0 TO 10BAR WITH A MINIMUM FLOW RATE
OF 6.6 LITRES/MINUTE WITH AN INDEPENDANT ISOLATOR
BOILER CAPACITY 220 LITRES

DRAIN: 40m.m.



UNDERCOUNTER PRESSURE BOILER BEX9-11 WITH SINGLE HOLE FONT



REF. DIMENSION 'X'
ALLOWANCE FOR BOILER FRONT PANEL/DOOR
TO BE MADE IN ORDER TO ACHIEVE A DIMENSION FOR 'X'
HEIGHT FROM UNDERSIDE OF TOP TO BOILER SUPPORT
IS 535m.m.

NOTES:

1. WEIGHT OF BEX9 BOILER WITH WATER 43kg
2. IF WATER TREATMENT UNIT IS REQUIRED THEN ADDITIONAL ALLOWANCE TO WIDTH OF CABINET SHOULD BE MADE. WIDTH STATED IS ONLY FOR BOILER REQUIREMENT
3. IF BOILER CABINET IS NOT SUPPLIED BY HOBART THEN CABINET MANUFACTURER MUST MAKE BOILER SUPPORT.

ELECTRICS: 400/50/3 + N + E 9.0kW FUSE AT 20 AMPS/PHASE, ENTERING FROM UNDER BOILER
WATER: 3/4" B.S.P. 5°C TO 60°C 1.0 TO 10BAR WITH A MINIMUM FLOW RATE
OF 6.6 LITRES/MINUTE WITH AN INDEPENDANT ISOLATOR
BOILER CAPACITY 220 LITRES

DRAIN: 40m.m.

