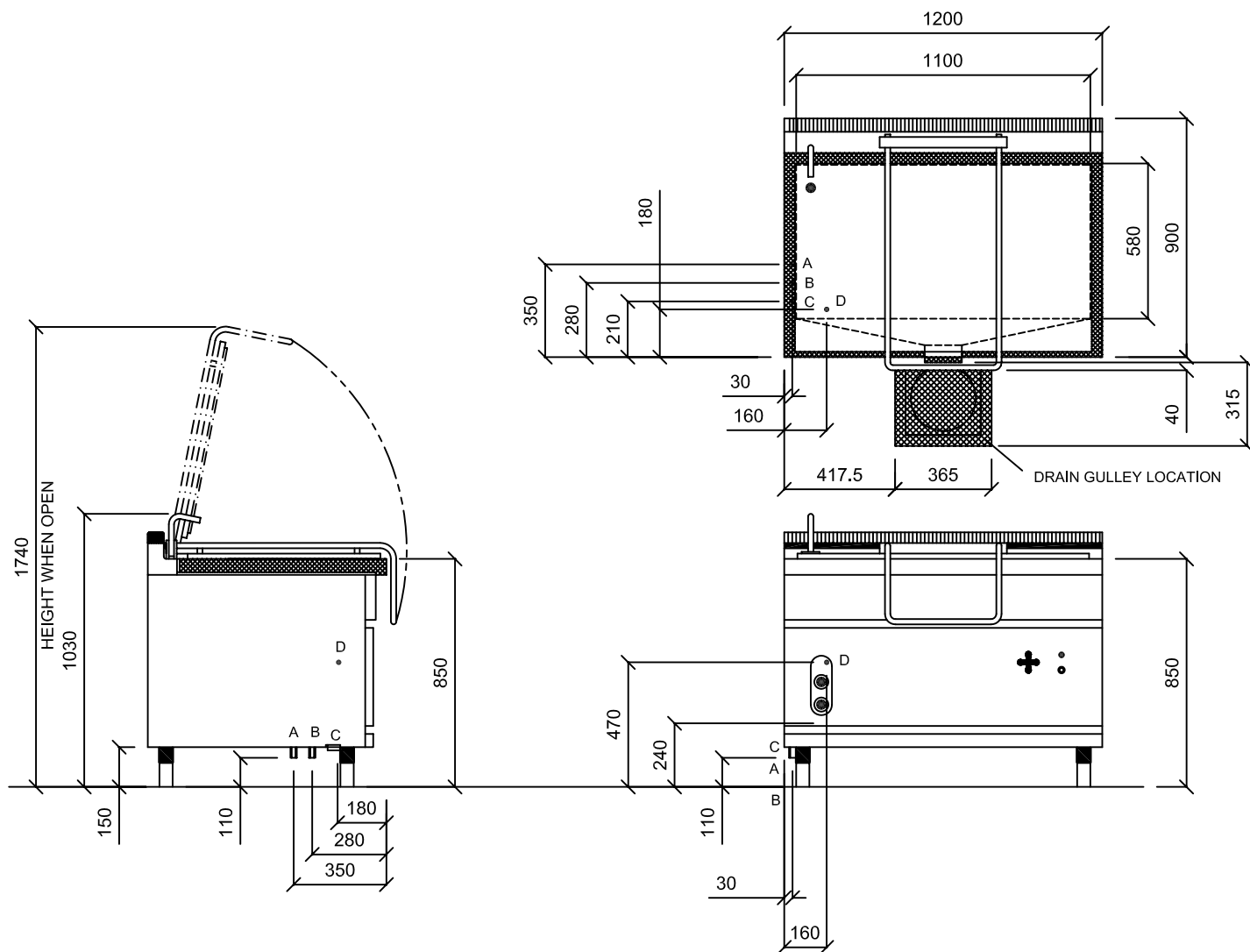


BR9-12GFM-11 BRATT PAN 110 LITRES
 WITH ELECTRIC TILT
 24.0kW (81,888 BTU`S) L.P. GAS
 230/50/1 0.32kW



A - WATER INLET 1/2" B.S.P.

B - GAS CONNECTION 3/4" B.S.P. 24.0kW 81,888 BTU`S PRESSURE 37mBAR

C - ELECTRIC CABLE GLAND INLET

D - 230/50/1 0.32kW FUSE AT 13 AMPS

